



## 2025 Super Scouting Camporee

Friday-Sunday, April 4<sup>th</sup>-6<sup>th</sup>, 2025  
Rancho Los Mochos

Hosted by  
Wekemnayon Village  
Order of the Arrow



**Wekemnayon Village  
Welcomes You to the Upcoming Camporee**

We welcome all Scouts and Scouters to the upcoming Camporee. In our first camporee in many years we have put together a program that will demonstrate their outdoor skills, preparedness for the unexpected, team work, and quick thinking by the patrols and their leaders.

Scouting endeavors to teach us many skills to prepare Scouts for life. This year's Camporee will again test one's individual and team skills. Thinking through the challenges that face us and coming up with good solutions are vital to taking care of ourselves outdoors, especially when we must get out of a difficult situation.

Ruthann Pehl  
Wekemnayon Village  
Camporee Youth Chair

Laura & Charles Hoffman  
Wekemnayon Village  
Camporee Co-Chairs

Quinn Cook  
Wekemnayon Village Chief

Suzanne Martin  
District Chair

Marcin Owczarz  
Wekemnayon Village Advisor

Alex Garcia  
District Director



Registration Fee: \$26 per individual

All youth and adult fees to be collected by the Troop  
Pay, by troop, online at <https://scoutingevent.com/023-95103>

Staff members should sign up separately (see section below), though they may travel and camp with their units.

# 2025 Super Scouting Camporee

## General Information

- All units are encouraged to follow the Covid-19 Guidelines on the next page.
- Rancho Los Mochos is located at 18450 Mines Road, Livermore, CA (Mile Marker 14.95)
- There is limited Cell service and wifi in camp.
- Each troop will be assigned a campsite location.
- Scouts should be in the Field Uniform when traveling to and from camp.
- Scouts can feel free to wear their troop's Activity Uniform while in camp.
- All accidents and emergencies are to be reported by Unit Leaders to Camporee Headquarters.
- All injuries are to be reported and presented to the Camp Medical staff by the Unit Leaders, Scouters present, or youth leaders. If an injured scout cannot be moved, the Camp Medical staff and Camp Ranger will arrange transportation.
- No Scout is to leave camp without reporting to their Scoutmaster.
- All meals will be prepared by patrols and should be well-balanced.
- The Camporee Committee Chairperson has final say on all scoring issues.
- Awards will be given out at the Saturday campfire.
- Scouts must follow the buddy system while moving around camp.

## Campsite Guideline

- No Open Fires (including charcoal) on ground in campsites... charcoal must be elevated above ground as not to scorch the ground (including Dutch oven cooking).  
At this time we believe that fires in designated fire pits will be allowed, but this may change at the discretion of the Camp Ranger. If so we will let you know.
- Keep areas around the water supply clear. Water is a shared resource in camp.
- Tents or shelters should be arranged to best advantage, and erected correctly.
- Patrol equipment should be stored in an orderly fashion.
- Ensure that water and sand buckets, rakes and shovels are present.
- Patrol menus and duty rosters are to be posted at all times.

## Meal Guidelines

- Patrol menu is used and cooking gear is adequate for the menu.
- Meals are selected according to the USDA MyPlate guidelines.
- Food handlers follow proper hygiene, and all food is properly stored.
- Meals are prepared, eaten and cleaned up in allotted time.
- Meals will be judged by patrol (lunch and dinner).  
This is subject to availability of Staff, and may change.
- Proper disposal of food waste is required – no spreading out or burying anywhere in the area.

# Archery and Rifle Range Requirements

- Just like summer camp, all participants must bring signed copies of the GGAC [Firearms Permission form](#) in order to participate in shooting sports events.
- Bring at least three signed forms for each Scout. One set for the archery range, one set for the rifle range, and each Scout must have one form with them to be allowed to participate.
- Each Scout must participate in the range safety presentation that will be given just after Saturday morning flags, at the flagpole location. Each Scout who attends will be provided a distinctive wristband.
- The Scouts need to be wearing their wristband, and have their permission form with them to participate.
- The Range Safety Officers have the final say on all matters at the range.

## Medical Forms

- All participants and guests should have the [Annual Health and Medical Record \(Parts A & B\)](#) filled out and brought to camp. This also includes copies of the individual's insurance card, and optionally a copy of the individual's Covid-19 vaccination and booster record.
- The Medical Officer for the event will usually ask that copies of the medical forms be turned in on check-in and if so they will be kept in the camp medical office and returned on unit check-out.

## Covid-19 Guidelines

- Individuals are encouraged to be in separate tents, unless they are family members.
- Indoor accommodations are discouraged except for those who require specific medical needs such as CPAP machines, or who are unable to sleep in a tent.
- Six feet distancing in outdoor camporee assemblies, events, and campfires is encouraged, but not mandatory. It is acceptable for some units and individuals to choose to follow distancing even if the other participants do not.
- Masks are not required for outdoor activities, but participants are encouraged to do so, especially if distancing is not possible.
- Masks are encouraged for indoor activities. These should meet CDC guidelines, and be snug fitting. This excludes: woven cloth masks, balaclava style wraps, and other home made or makeshift masks. N95, KN95, KF94s masks are recommended.
- Troops should bring hand sanitizers, and patrols should carry at least one bottle in their patrol kit while competing in the events

These requirements are subject to CDC, California Department of Public Health (CDPH), and Alameda County Public Health Department guidelines:

### Alameda County Covid-19 current guidelines

- <https://covid-19.acgov.org/index>
- <https://covid-19.acgov.org/beyond-the-blueprint>

### California Home and Community Covid-19 current guidelines

- <https://www.cdph.ca.gov/Programs/CID/DCDC/Pages/COVID-19/HomeAndCommunity.aspx>
- <https://www.cdph.ca.gov/Programs/CID/DCDC/Pages/COVID-19/guidance-for-face-coverings.aspx>

# 2025 Super Scouting Camporee

## Schedule of Activities

### Friday

6:00 - 8:00 p.m.	Pack inspection, hike to camp, setup camp.	Main Parking Area
9:00 - 9:30 p.m.	Patrol Leaders Meeting	Camporee HQ
9:30 - 10:00 p.m.	Camp Staff Meeting	Camporee HQ
10:00 - 10:30 p.m.	Troop Cracker Barrels	Troop Campsites
10:30 p.m.	Taps	



### Saturday

7:00 a.m.	Reveille	
7:00 - 8:30 a.m.	Breakfast by patrol	Troop Campsites
8:30 a.m.	Opening ceremonies	Campfire Bowl
9:00 - 9:30	Range Safety orientation	Campfire Bowl
9:30 - 11:30 a.m.	Patrol Events	Various locations
11:30 a.m. - 1:00 p.m.	Lunch (judged) by patrol	Troop Campsites
1:00 - 4:30 p.m.	Patrol Events	Various locations
4:30 - 5:00 p.m.	Bonus Event	Activity Field
4:30 - 5:30 p.m.	Scoutmaster Dutch Oven cooking contest	Manzanita Flats Roundabout.
5:30 p.m.	Evening Colors	Campfire Bowl
5:45 - 7:00 p.m.	Dinner (judged) by patrol	Troop Campsites
8:00 - 9:00 p.m.	Campfire	Campfire Bowl
9:30 p.m.	Order of the Arrow Village Announcements	Campfire Bowl
10:30 p.m.	Taps	



### Sunday

7:00 a.m.	Reveille	
7:00 a.m.	Breakfast by patrol	
8:30 a.m.	Scouts Own	Manzanita Flats
9:00 a.m.	Final Assembly & Awards	Manzanita Flats
10:30 a.m.	Campsite inspections prior to departure.	Troop Campsites
	Final Checkout and Patch Distribution	Camporee HQ

# 2025 Super Scouting Camporee

## Patrol Competition Events

Theme	Description
<b><i>Shooting Sports</i></b>	
Yoshi's Skill	Come visit the archery range and shoot some arrows.
The Shooting Rifle	Come to the gun range and shoot rifles.
Koopa Chuckers	Come to the tomahawk range and throw accurately.
<b><i>Scout Skills</i></b>	
Activate Fire Flowers	Be able to quickly build and control a fire.
One Up Time	Explain basic first aid skills and transport fellow jungle travelers.
Search Party	Follow the compass clues. Avoid the wrong adventure!
Peach's Garden	Identify local wildlife, plants and constellations.
Level Creation	Can you identify what is wrong with this campsite?
Raise the Flag	Demonstrate knots & lashings. Patrol flag needed.
<b><i>Team Building</i></b>	
Skit Planning	Be creative and come up with a great jungle themed skit.
Speak to the Shy Guy	Communicate a message without a sound.
Escape Bowser's Castle	Be prepared to overcome several tasks and obstacles
Mystery Box	Observation and recall of objects as a patrol.
<b><i>Fun</i></b>	
Cappy's Coins	Send your discus in accurate flight to reach the target.
Mario Folds	Flying your Paper Airplane designs for distance and accuracy.
<b>BONUS EVENT</b>	
Double Up Derby	Each patrol can enter one team made up of the tallest and shortest members of the patrol for this three legged race.



All events subject to change or substitution based upon weather, local conditions, safety guidelines, or the availability of qualified supervision.

# 2025 Super Scouting Camporee Awards and Recognition

## Event and Event Overall Awards

Ribbon	Level	Event Awards	Events Overall Awards
First Place	Excellence	Top score in each event	Top cumulative score
Second Place	Proficient	2nd best score in each event	2nd best cumulative score
Third Place	Standard	3rd best score in each event	3rd best cumulative score

*Notes In case of ties, ribbons for lower levels may not be given.*

*The overall event award does not include the Bonus Event, Cerberus - Three legged race.*

## Patrol Awards

Ribbon	Level	Qualification	755 points possible
Red/White/Blue	Excellence	Top 2 patrols	Need 80% of possible points
Award of Merit and Honor	Proficient	640+ points	80% of possible points
Award of Merit	Standard	600+ points	75% of possible points
Award	Participating	200+ points	25% of possible points

## Troop Recognition

Ribbon	Level	Qualification	370 points possible
Award of Merit and Honor	Proficient	314+ points	85% of possible points
Award of Merit	Standard	259+ points	70% of possible points
Award	Participating	185+ points	50% of possible points

## Scouting Star Spirit Award

For the patrol that earns the most Spirit points at each station.

*Note: This **does** include the Bonus Event: Three Legged Race.*

## Scoutmasters' Dutch Oven Cookoff

The purpose of this contest is to allow Scoutmasters to show off their talents, and claim bragging rights for their troops!



# 2025 Super Scouting Camporee Scoring Overview

## Patrols

Activity	Maximum Points
Check-in inspection	50
Campsite inspection	100
Saturday Lunch	50
Saturday Dinner	50
Events 40 points max per event	480
5 points for each Scout over 5 in patrol	15
5 points for each First Year Scout	40
Bonus Events	20
<b>Grand Total</b>	<b>805</b>



## Troops

Responsibility	Maximum Points
Troop organization	40
BSA Health/Medical & Covid Forms	50
Troop provides staff member (50 each)	100
Troop first aid kit	40
Troop campsite	50
Safety and Sanitation	50
Troop Gateway bonus	40
<b>Grand Total</b>	<b>370</b>



## Scoutmasters' Dutch Oven Cookoff

Responsibility	Maximum Points
Bring a Dutch oven offering for judging	10
Judged as yummy	10
Judged as unique	10
<b>Grand Total</b>	<b>30</b>





# 2025 Super Scouting Camporee

## Patrol Scoring Details

The maximum point shown can be reduced at the inspector's judgment.

### Check-in inspection

- 10 pts: Patrol leader and Assistant Patrol Leader are present with patrol roster.
- 10 pts: Patrol has flag on pole.
- 10 pts: Patrol has first-aid kit, map, and compass easily available.
- 10 pts: Patrol can demonstrate their cheer or yell.
- 10 pts: Patrol ready to hike personal gear to campsite.

### Campsite inspection

- 10 pts: Patrol site is identifiable.
- 10 pts: Patrol site is laid out orderly with clean walkways.
- 10 pts: Patrol gear is orderly and neat.
- 10 pts: Personal gear is orderly and neat.
- 20 pts: Table and cooking area is clean and neat.
- 10 pts: First Aid kit is visibly available. (Troop kit is acceptable).
- 10 pts: Garbage collection is neat.
- 20 pts: Firepit is clean, wood stacked, shovel/rake present, water & dirt buckets nearby.

### Saturday Lunch & Saturday Dinner

- 10 pts: Meal is prepared and eaten as a patrol (not as a troop, or as individuals).
- 10 pts: Menu is available.
- 10 pts: Meals are made and cleaned up in the allotted time.
- 10 pts: Roles to prepare, assist with, and clean up meals are assigned in advance.
- 10 pts: Meal enjoyed by patrol members.

### Event (each)

- 8 pts: Scout Spirit, mutual support and positive attitude. patrol flag, yell, accessories.
- 8 pts: Participation by the entire patrol, unless the event limited participation.
- 8 pts: Skill, was the event completed successfully.
- 8 Pts: Did the patrol complete the event?
- 8 pts: Ranking, for timed events, or for scoring events.

### Bonus Event

- 5 pts: Participation with Patrol and Scout Spirit.
- 5 ptr: Ranking by race placement.

### Patrol Members

- 5 pts for each Scout in excess of 5 patrol members up to a maximum of 15 points.
- 5 pts for each 1st year Scout in the patrol, up to a maximum of 40 points.

# 2025 Super Scouting Camporee

## Troop Scoring Details

The maximum point shown can be reduced at the inspector's judgment.

### **Troop organization**

- 10 pts for having the online registration matching the actual participants.
- 10 pts for two deep leadership, proper gender of leaders.
- 10 pts for SPL running troop, and checking in along with the Scoutmaster.
- 10 pts if all leaders present are fully trained.

### **Troop first aid kit available and visible**

- 30 pts for having a troop first aid kit.
- 20 pts for having it visible and easily accessible.

### **BSA Health/Medical & GGAC Firearms forms**

- 20 pts for having BSA medical records at camp.
- 20 pts for having the medical forms secured. They contain privacy and sensitive information.
- 10 pts for having the GGAC firearms permission forms ready.

### **Troop provides staff member (50 each)**

- 50 pts for providing one staff member.
- 100 pts for providing two staff members.

### **Campsite**

- 10 pts: Troop campsite is orderly and neat.
- 10 pts: Troop campsite is organized by patrol.
- 10 pts: Troop flag is displayed.
- 10 pts: American flag is displayed.

### **Safety and Sanitation**

- 10 pts: Garbage collection/bags are in use, and site clean.
- 20 pts: Fire pit(s) are clean, wood stacked, shovel/rake present, water & dirt buckets nearby.
- 10 pts: Water and handwashing stations are clean and not used for dishes.
- 10 pts: Kybo is clean and neat.

### **Troop Gateway bonus**

- 10 pts: Troop has an entrance gateway.
- 10 pts: If gateway present, is it safe and secure?
- 20 pts: If gateway present, are there no environmental impacts?

## 2025 Super Scouting Camporee Camporee Staffing



We are asking each troop or crew to recommend 1-2 Scouts to serve as Camporee Staff (preferably members of the Order of the Arrow and/or older Scouts with camporee experience that are first class or above) as well as two (2) Assistant Scoutmasters.



Scoutmasters, please encourage your senior members to be on staff. They can sign up by just filling out this form <https://forms.gle/H15CXCwQe3wVQSZE7> . It is now their turn to give back to our district's featured Boy Scout activity. Service hours may be earned for scout advancement for helping in a District Event with Scoutmaster approval.

We need a large number of staff members to facilitate the number of patrols and Scouts participating in all of the patrol events -- your support on this will be appreciated.

Volunteers who are going to be on staff should not be registered with their unit, as there is a special staff pricing to cover their food. However staff will still be able to camp with their unit if they wish. The Staff registration is shown below.

Scoutmasters if you have any questions please contact:

Laura Hoffman

Alameda Area District Camporee Chair

[LauraJHoffman1612@outlook.com](mailto:LauraJHoffman1612@outlook.com)

Staff Signup: <https://forms.gle/H15CXCwQe3wVQSZE7>

Staff Registration: <https://scoutingevent.com/023-95480>



# 2025 Super Scouting Camporee Unit Check in Sheet

Troop/Crew #\_\_\_\_\_

Adult Leader for Camporee: \_\_\_\_\_

Youth Leader for Camporee: \_\_\_\_\_

Scouts / Crew members

Address for Ribbon Delivery

Total Scouts: \_\_\_\_\_

\_\_\_\_\_

Total Adults: \_\_\_\_\_

\_\_\_\_\_

Webelos Guests:

\_\_\_\_\_

Total Webelos: \_\_\_\_\_

\_\_\_\_\_

Total Adults: \_\_\_\_\_

\_\_\_\_\_

List patrol names & number of patrol members

_____	_____
_____	_____
_____	_____
_____	_____
_____	_____

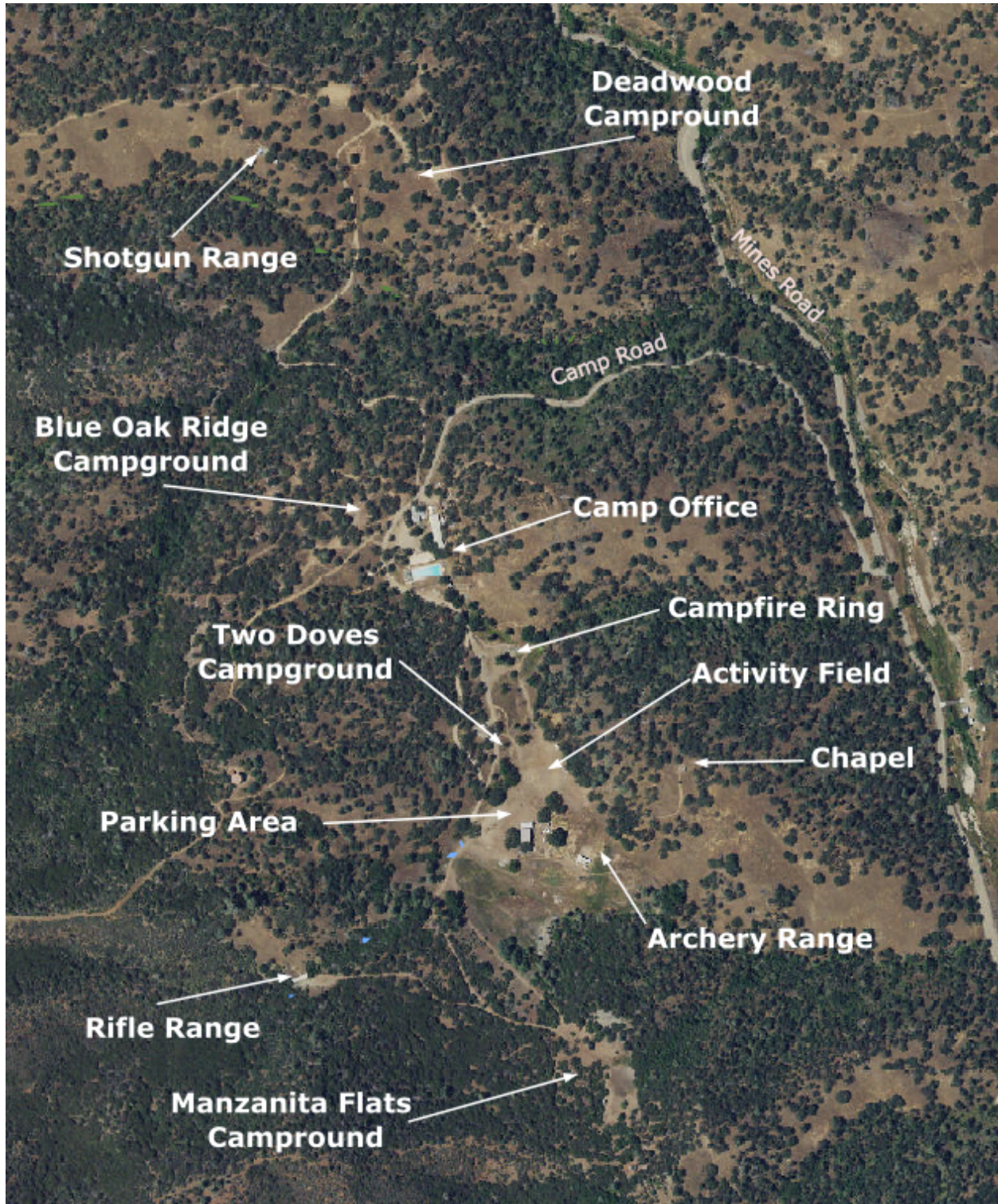
Vehicles (Make and license plate)

_____	_____
_____	_____
_____	_____
_____	_____
_____	_____

Please present this when your troop checks into camp.



## 2025 Super Scouting Camporee Rancho Los Mochos - Program Areas





# 2025 Super Scouting Camporee Manzanita Flats Campground

